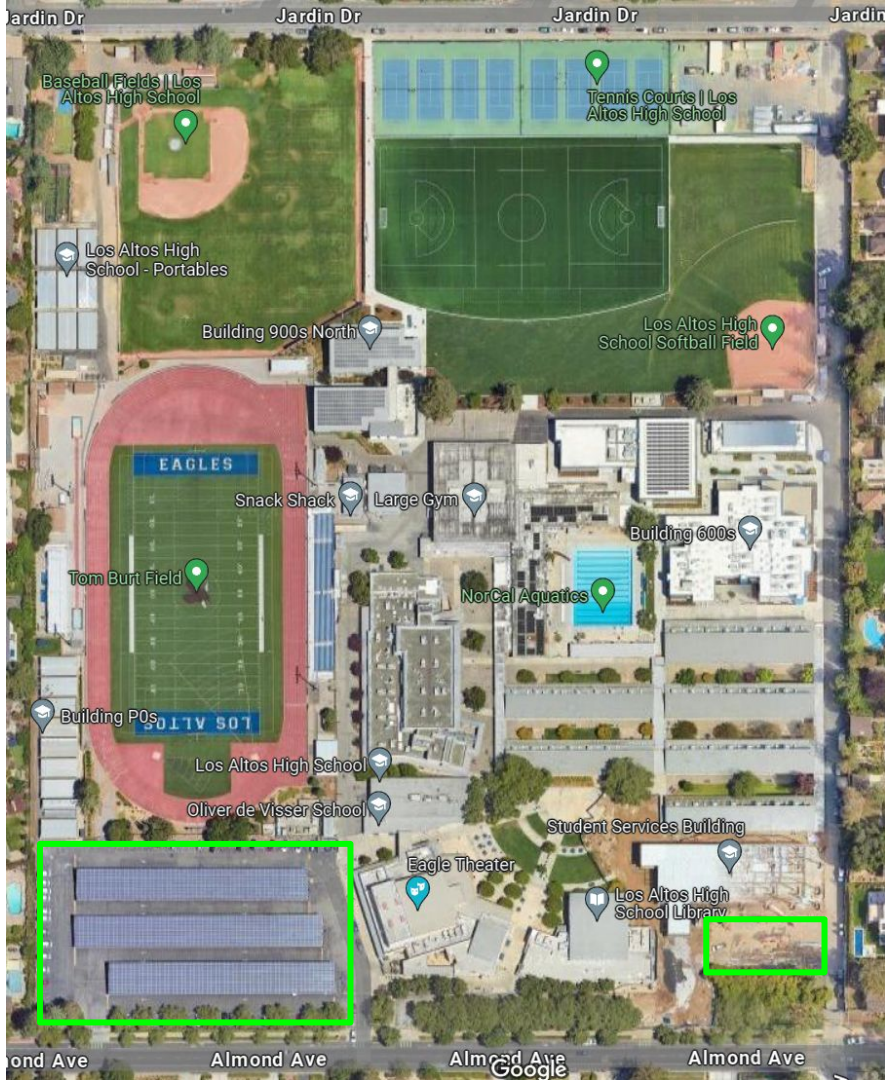


Parking at Los Altos High School



Main Parking Lot



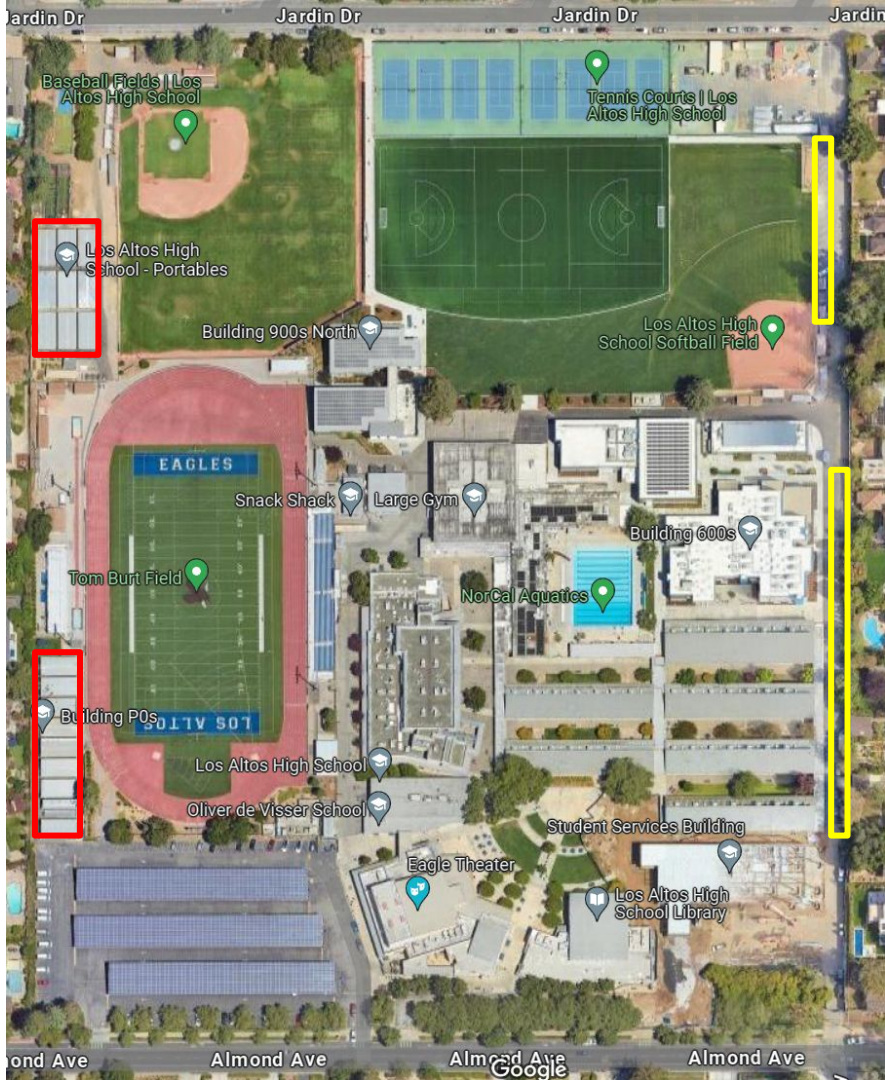
Student Services Lot





Parking by the numbers

| Main Parking Lot | | | | | |
|-----------------------------|---------|---------|------------|---------------|--------------|
| Staff | Student | Visitor | Accessible | District vans | Total |
| 191 (*31 EV) | 62 | 12 | 8 | 6 | 279 |
| Student Services Lot | | | | | |
| Staff | Student | Visitor | Accessible | | Total |
| 24 | - | 11 | 2 | | 37 |

Additional future
parking options



 = location of temporary classrooms

 = parking to be gained back at end of construction

Bicycle & pedestrian
campus entry points



Considerations for 2024-2025

- Recalibrate number of staff, student and visitor spots
- No charge for student parking permits - this will promote daily use of all student parking spaces in the main lot
- Potential changes by City of Los Altos to Jardin Ave striping
- Continued use of East Driveway for construction access and staging